

# TE UKU SCHOOL NEWSLETTER

*e x p a n d i n g   h e a r t s   a n d   m i n d s*

**Te Pānui o Te Kura o Te Uku 15/16**

**26 Haratua 2016**

Tēnā koutou e te whānau o Te Uku

## **Reminder: Whānau Hui**

Our next hui is scheduled for Wednesday 1<sup>st</sup> June, 9:15AM, in the staffroom. Any of our families are very welcome to attend. The agenda items will include discussion about:

- Naming of 'new' classrooms spaces. This week Amber and Jacqui met with Mani to talk about some options which they will share at this next hui.
- Art work for the Hall walls could be linked to the names chosen for classroom spaces. We hope to start developing a plan for the art works to be installed (and created by children with guidance from carvers/weavers) so that they can be made and installed in 2017.
- Opening of 'new' classrooms; the junior classroom block should be completed by July, and the two classrooms in the senior block completed by September so we will discuss whether we should have one or two ceremonies.

## **SWiS Resignation**

Our Social Worker Briony Kirk is resigning from her position at the end of this term. Briony's employer, Family Works, is in the process of appointing a new social worker.

## **Parental Leave Teacher Appointment**

The Board has decided to re-advertise the teaching position that will become vacant when Victoria Cooper takes parental leave at the end of the term. Interviews for this position will take place on Saturday 18<sup>th</sup> June.

Ngā mihi ki a koutou,

**Rachel Allan**

## **Fundraising Committee Reminder: Oxford Pies**

Winter is coming and so is Oxford pies for those cold nights. We will be selling Oxford pies to raise money for the school, so stock up the freezer for winter. Please remember to return forms with payment to the school office by **Tuesday 7<sup>th</sup> June** for delivery on **Monday 20<sup>th</sup> June**. You might also like to check with family and friends to see if they would like any for the winter. Thanks in advance for your support.



Got a way with words? Love to draw? Waikato District Libraries are welcoming entries to the Waikato District Matariki competition.

To enter, create a short story, poem or design a book cover to celebrate Matariki.

**Competition opens 16<sup>th</sup> May and closes on 17<sup>th</sup> June 2016**

**For more information and entry forms go to our website [www.waidc.govt.nz](http://www.waidc.govt.nz) or visit your local Waikato District Library or Council office.**

**Entry forms are also available from the front desk at the school office.**

## **2016 Gwynne Shield trials- Panthers**

Sunday 15<sup>th</sup> May & Sunday 22<sup>nd</sup> May at Swarbrick Park. 9:15-1:15pm. Calling all skilled rugby players yrs 6-8 and 60kg or under. Please bring: boots, mouth guard, drink bottle, smile and determination and a great attitude. You must attend both trial dates. For more information contact Sandra Jennings [kiwifem@gmail.com](mailto:kiwifem@gmail.com)

## **Piano Lessons for Beginners**

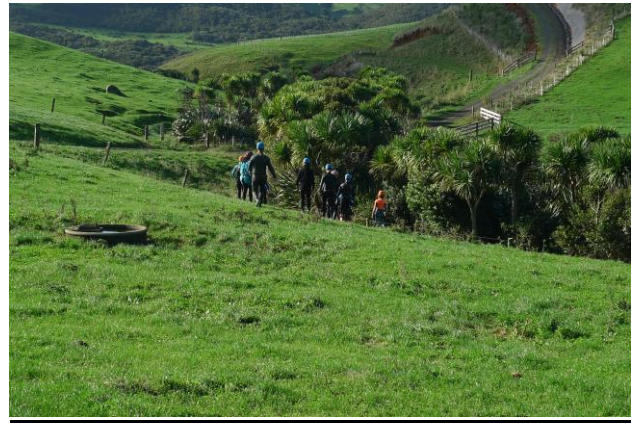
Piano lessons with Jacqueline Barry. Lessons are for beginners. Grade references ATCL London. If interested contact Jacqueline Barry 825 7427

## WPCA 4

On the 20<sup>th</sup> of May 2016 Discovery 4 set out on their 4<sup>th</sup> William Pike challenge, canyoning. We got all our safety gear on and set out into the unknown. There were lots of potential hazards such as floods, slippery rocks, falling off cliffs, and getting lost so we had to be careful. We started off by jumping into a stream, knee deep, then we came to a pipe about 4 metres long in which we had to get on our hands and knees and crawl through. After that we came to the first water fall, about 2.5 metres tall, which we had to jump off. Next we climbed down a bunch of boulders and eventually we got to another water fall which we climbed down. We crawled down water, rocks and shrubs like a bunch of ninjas until we approached an 8 metre waterfall which we had to climb up to have our lunch. After that we got ready to abseil down. Once we got to the bottom we had to ninja our way back to the van.

It was an exciting experience and I hope we can do it again. We would like to say thank you to Gareth, Anne and Richard from Raglan Rock for making this all happen and also our teacher Mrs Clarkson.

*Kipp Parker and Adam Wallis*



## Board of Trustees Election Declaration of Parent Election Results

At the close of nominations, as the number of valid nominations was fewer than the number of vacancies required to be filled, I hereby declare the following duly elected:

**Katherine Parrot**  
**Sven Ladewig**

**Brenda Carter**  
**Angela Thompson**

*Rachel El Kamraoui*  
Returning Officer

### Forthcoming Events

Interschool Cross Country – Friday 27<sup>th</sup> May (Waitetuna School)

Whānau Hui - Wednesday 1<sup>st</sup> June, 9:15AM, in the staffroom

Queen's Birthday Weekend – Monday 6<sup>th</sup> June – School will be closed

**10 WAYS WITH BEANS, LEGUMES AND LENTILS**

# BAKED BEANS

Find us on [fb.com/ProjectEnergize](https://fb.com/ProjectEnergize)

Baked beans on wholemeal toast are a quick and easy meal for breakfast, lunch or dinner. Try popping them on a baked potato with a sprinkle of grated cheese.

Developed by Sport Waikato 2016

**10 WAYS WITH BEANS, LEGUMES AND LENTILS**

# MAKE MEAT GO FOR MILES

Find us on [fb.com/ProjectEnergize](https://fb.com/ProjectEnergize)

Make meat go further by adding a can of kidney beans to mince dishes – perfect for nachos.

Developed by Sport Waikato 2016