

Tēnā koutou e te whānau o Te Uku

## **\*\*School Closed Monday 4<sup>th</sup> June – Queen’s Birthday Weekend\*\***

### **New Arrivals**

We would like to welcome the Duirs family to our Te Uku School community. Louis, Olive and Remy are all settling in to the Junior Discovery, and have joined us from Raglan Area School. Also joining us this week in Whaea Catherine’s room as a new entrant, is Scarlett Paurini. Please join me in making their transition a happy and easy one.

### **Road/ Parking Safety**

BOT currently has multiple safety concerns around the entrance to our school. We are continuing communication with a representative at NZTA to create a safe site in front of our school. We would like to increase our reporting of safety issues and near misses in order to highlight the frequency of these problems to NZTA, as they are the ones who can change the design of the road. We would appreciate parents help in this matter, there is a free app that can be downloaded to make reporting easier. We are also working with Te Uku Roasters who have started a petition to change the speed limit in Te Uku.

Here’s the link to the info about the app, which is a free app.

<https://www.nzta.govt.nz/safety/zero-harm/mobile-apps/>



### **Fundraising Committee Call-Out**

To all the fabulous Te Uku Parents...we need you!

As the previous fundraising committee are all now working full time, we have vacancies for new parents & existing to step forward and do your voluntary part in helping us to fundraise.

The previous committee have been committed for four years & will still be there to help and support all events where possible.

We wouldn’t have a sandpit if it wasn’t for the dedicated committee we’ve had. It is projects like this, we can’t complete without a committee and parent help.

Any ideas, time, donations (if you have no time to help) would be greatly appreciated.

The BOT are currently considering a range of exciting projects for the FRC to contribute to.

Please don’t be shy, it is super fun and very rewarding.

Contact Rachel in the office for more information.



### **Junior Discovery Waitomo Caves Trip**

The advance weather forecast is looking positive, and Junior Discovery are getting excited about our trip next Friday!

We have been overwhelmed with the positive response from parents wishing to attend, and offers of transport to and from Waitomo Caves. In fact, we are in the giddy position of having far more transport offers than we have students to fill the car seats! To that end, parents who have kindly offered to provide a vehicle, will be receiving a notice home with their child/ren this afternoon, relating to the travel arrangements. Please read and return the attached form as soon as possible please, so we can finalise the logistics.

What an amazing whanau we have at Te Uku School!

## Te Uku School Facebook page

If you haven't done so already, please join us on Facebook. This provides a quick and easy way for us to communicate with our community, especially when time is of the essence. It also provides a fabulous platform to share what is happening in our school on a day to day basis. <https://www.facebook.com/teukuschool/>  
The school website <http://www.teuku.school.nz/> also carries a range of information, and some amazing photos of our activities.

## Term Two Events:

**Queen's Birthday Monday School Closure:** Monday 4<sup>th</sup> June

**Junior Discovery Waitomo Caves Trip:** Friday 8<sup>th</sup> June

**Vision and Hearing Checks:** Wednesday 20<sup>th</sup> June

**Ki-o-rahi Tournament:** Friday 29<sup>th</sup> June

**Next Board Meeting:** Monday 25<sup>th</sup> June, 6:30PM



<https://conversation.education.govt.nz/>

This website and the online survey are part of a national Education Conversation - Kōrero Mātauranga.

The Minister of Education Chris Hipkins wants to hear from a wide range of New Zealanders about the education system of the future. He'd like this national Education Conversation to set the way forward and agree shared priorities across the whole system – from early learning, schooling and tertiary through to lifelong learning.

He's looking for you and your community to be involved. Children, young people, their parents, whānau, communities, teachers, adult learners and those who need learning support, Māori, Pasifika, employers and industry, along with researchers, disability organisations and education leaders at all levels – you are all encouraged to join the conversation.

Four questions:

1. If you were the boss of education in New Zealand, what would you do first?
2. What does a successful student of the future look like to you?
3. What will they need to know and be able to do?
4. What things need to be in place to make sure every learner is successful?



## **Supporting our young people**

Become a foster carer and make a positive difference in a young person's life. We deliver specialist services to support young people with challenging behaviors. If you want be remunerated to work in an evidenced-based program and are interested in providing full-time or respite care for a young person, we want to hear from you!

[www.youthorizons.org.nz](http://www.youthorizons.org.nz)

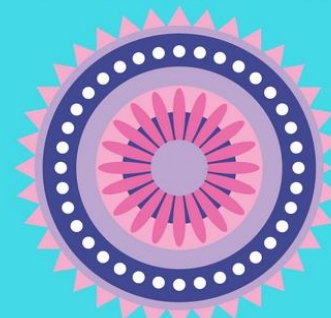
[info.hamilton@youthorizons.org.nz](mailto:info.hamilton@youthorizons.org.nz)

.nz

ph: 07 838 3671

## **TE UKU YOGA GROUP**

Mondays, 7-8.30pm  
Te Uku School Hall



Yoga Based Exercises for all Levels  
\$5 Koha to Te Uku School PTA

Lead by Irene from Circus Aotearoa  
and Stephanie from SpiritRides  
Join our FB GROUP

## **Edventure Outdoors- School Holiday Camps**

These July school holidays we are running 2 awesome camps.

Tramping, rock climbing, possum trapping, team building challenges, hot pools and much more

Edventure Outdoors Camp, Mt Pirongia, July 9-13th

Edventure Winter Camp, Aongatete lodge, July 16-20th

- 8-14 yr olds

- OSCAR available

- Pick up/drop off AKL, BOP, Waikato

Book at [www.edventure.co.nz](http://www.edventure.co.nz) or

email [mark@edventure.co.nz](mailto:mark@edventure.co.nz)